

Frozen Foods

- Monique's Pastry Crusts - DeSoto
- Nature's Bakery Cooperative - Madison
- Renaissance Farms - Spring Green
- Sunshine Burgers - Fort Atkinson

Sweet & Savory Snacks

- Austin's Rush Creek Farm - Ferryville
- Becki's Olive Salsa - Eau Claire
- Bucky Badger - Verona
- Go Macro Protein Bars - Viola
- JAS Candies - Platteville
- Oskri Organic Health Bars - Ixonia
- Really Goods - Madison

Health, Beauty & Other Products

- Aura Cacia Essential Oils - Urbana, IA
- Cleen Laundry Detergent - Dubuque, IA
- Driftless Mama - Dodgeville
- Four Elements Herbal Products - North Freedom
- Gentle Breeze Honey - Mt. Horeb
- Lacey's Lathers - Mineral Point
- Placke Organic Acres Soap - Cuba City
- Safe Home Farm - Platteville
- Seeds Saver Seeds - Decorah
- Valley View Emu - Fennimore
- Viroqua Creative Workshop - Viroqua



Local Art & Gifts

Stop in today to see our wide selection of paintings, photography, jewelry, ceramics, and other crafts - all hand-produced within the region.

- Hannah Ruth Adams - Platteville
- Susan Becker - Bellevue, IA
- Coleman - Mineral Point
- Farm Girl Studio / Cathie Roberts - Scales Mound, IL
- Frankly Functional / Jessica Frank - Galena, IL
- Stephan Gassman - Platteville
- HandMade / Laura Burns - Belmont
- Kathy Jacobson - Dodgeville
- Monica Jagel - Ontario
- Tom and Marti Kastner - Platteville
- Betsy Klinger - Platteville
- Lily Long - Platteville
- L Powers Studio / Lauren Powers - Mineral Point
- LedgeWood Design / Valerie Haefner - Dodgeville
- Menominee Creek / John-Thomas Richard - Hazel Green
- Ben Russell - Mineral Point
- Jeff Stiles - Dubuque, IA
- StoneCrop / Heidi Dyas-McBeth - Platteville
- Super Snack for Super Kids - Julie Stephenson & Sarah Fox MD - Mineral Point
- That Tree / Mark Hirsch - Platteville
- Windy Ridge Pottery / Joe & Christy Cole - Mineral Point
- Jeff Wright - Platteville
- Yellow Dog Workshop / Hap Daus - Platteville



Varied Selection of local art and books!

*For updates to printed brochure go to
<http://www.driftlessmarket.com/resources>*



95 W. Main St.
Platteville, WI
608.348.2696

Guide to Local Products

Driftless Market is the Tri-State area's choice for fair trade, organic, and locally grown foods. We offer a wide variety of healthy, sustainable, and ultimately, better tasting foods year round.

Our goal today is the same as it was in 2008; provide shoppers with a regular location to buy the products they need and value, while maintaining a focus on quality products, affordable prices and exceptional service.

We are passionate about our community and about taking care of our planet and want to serve as a resource for those who feel the same way.



Meet us at the Driftless!

Heidi & Bill McBeth

Robin Timm & Jayne Dunnum

Store Hours

Monday - Friday: 9am to 7pm
Saturday: 9am to 5pm
Sunday: Closed

www.driftlessmarket.com

Fresh Produce

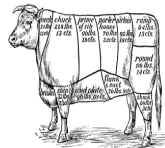
- Gary Olson – Platteville
- Honey Hill Org Farm, Carrie Post - Potosi
- Safe Home Farm, Robin Timm & Jayne Dunnum - Platteville
- Small Family Farm CSA - LaFarge
- StoneCrop Farm, Bill McBeth – Platteville
- Tree of Life Gardens, Marc Militzer – Cuba City
- Two Onion Farm CSA, McGuire Family – Belmont



Many Vendors throughout the Season!

Local Pasture Raised Meats

- Dochnahl Farm - Dodgeville
- James' Pine Valley Farm, – Mineral Point
- Marr's Valley View Farm, – Mineral Point
- Oak Del Farm – Rewey
- Straka Family Farm - Platteville
- Valley View Emu – Fennimore



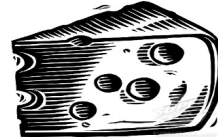
Baked Goods/Granola

- Cottage Baker– Fennimore
- Natures Bakery Cooperative - Madison
- Really Granola - Mt. Horeb
- Sinsinawa Bakery – Sinsinawa



Fresh Dairy, Cheese, & Eggs

- Carr Valley Cheese – Fennimore
- Cedar Grove – Plain
- Cesar's Cheese - Columbus
- Holland Family / Marieka Gouda - Thorp
- Hook's Cheese – Mineral Point
- Kalona Dairy - Kalona, IA
- Klondike Cheese - Monroe
- LaClare Farm - Malone
- Meister Cheese - Muscoda
- Montchevre' Goat Cheese – Belmont
- New Century Farm Eggs– Shullsburg
- Nordic Creamery - Westby
- Organic Valley – LeFarge
- Red Barn Family Farms - Appleton
- Roelli Cheese– Shullsburg
- Roth Kase Cheese – Monroe
- Sassy Cow Dairy – Columbus



Local Product Distributors: For many of our local products we go directly to the local the source, we also utilize local volunteers for pickups and we get direct deliveries from many of our producers. For others we go through the following local distributors:

- Elegant Foods - Madison
- L & L Foods - Verona
- Lipari Foods - Madison
- Rock Cheese - Madison



Local Grocery Shelves

- Austin's Rush Creek Farm - Ferryville
- Bucky Badger - Verona
- DiSalvo's Pasta Sauce - Stoughton
- Fizeology - Viroqua
- Great River Milling - Fountain City
- Man's Best Friend Hot Sauces – Milwaukee
- Nessalla Kombucha - Madison
- Renaissance Farms - Spring Green
- RP Fresh Pasta – Madison
- Szczutkowski Applesauce - Richland Center
- Tapuat Kombucha - Sister Bay
- Wundomus Seasoning – Platteville



Honey, Mustard, Syrups, Etc...

- Lynn Borcharding Honey Comb - Belmont
- Cook's Woods - Fennimore
- Driftless Farms Maple Syrup - Richland Center
- Hawk Wind Hot Mustard and Relish – Baraboo
- Martha's Hot Mustard – Lancaster
- Wisconsin Natural Acres - Chilton
- Rolling Meadows - Elkhart Lake
- Skinny Sticks Maple Syrup - Marathon,
- UW-Platteville Sunflower Oil - Platteville
- Willow Creek Apiaries – Potosi



Bulk Foods

- Frontier Natural Foods – Norway, IA
- Kickapoo Coffee Exchange – Viroqua
- Lonesome Stone Milling – Lone Rock
- Natures Bakery Cooperative – Madison

